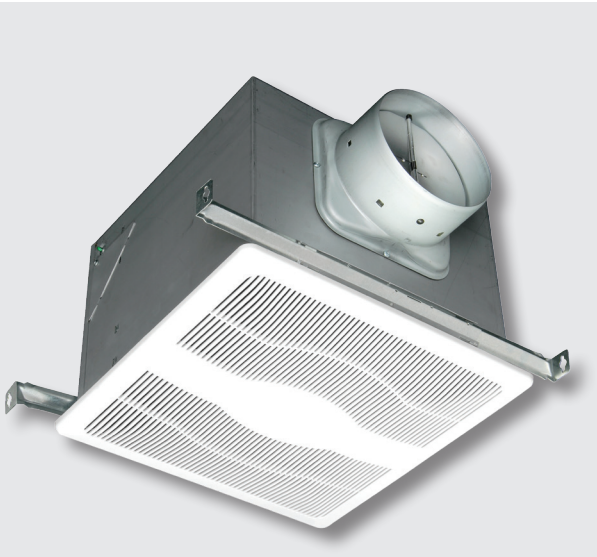




# DC Motor Exhaust Fans

- **ENERGY STAR® Certified**

- Energy efficient DC motor maintains CFM ratings across multiple static pressures and is suitable for continuous operation
- Solution for ASHRAE 62.2 continuous whole house ventilation
- Can be used to comply with California Title 24 as well as CALGreen (humidity sensing models meet the CALGreen requirements for use in bathrooms)
- 6" Round duct connector with gasketed damper protects against back drafts and seals the duct better than any other damper on the market today
- Listed for installation over a tub or shower on a GFCI circuit
- Hanger bar installation
- HVI Certified performance



MODEL	CFM RANGE	SONES RANGE	CFM/WATT	SPEEDS	DUCT SIZE	ASHRAE 62.2
<b>DC EXHAUST FANS</b>						
D4S	40 - 120	<0.3 - 0.3	18.8	1	6"	Whole Building/Local
D4D	40 - 120	<0.3 - 0.3	18.8	2	6"	Whole Building/Local
<b>DC EXHAUST FANS with MOTION SENSOR</b>						
Integrated motion sensor detects occupancy of the room and turns the fan on (or to high speed for dual speed models) and keeps it running for the preset time after the room is vacated before automatically turning the fan off (or back to low speed). Timer can be set from 30 seconds to 80 minutes.						
D4SG	40 - 120	<0.3 - 0.3	18.8	1	6"	Whole Building/Local
D4DG	40 - 120	<0.3 - 0.3	18.8	2	6"	Whole Building/Local
<b>DC EXHAUST FANS with MOTION SENSOR and HUMIDITY SENSOR</b>						
Integrated motion sensor detects occupancy of the room and turns the fan on (or to high speed for dual speed models) and keeps it running for the preset time after the room is vacated before automatically turning the fan off (or back to low speed). Timer can be set from 30 seconds to 80 minutes. Integrated humidistat senses the humidity level of the room and turns the fan on (or to high speed for dual speed models) until the humidity level is below the preset level. Can be set up to 80% RH. The fan can also be activated through a wall control switch.						
D4SGH	40 - 120	<0.3 - 0.3	18.8	1	6"	Whole Building/Local
D4DGH	40 - 120	<0.3 - 0.3	18.8	2	6"	Whole Building/Local
<b>DC EXHAUST FANS with HUMIDITY SENSOR</b>						
Integrated humidistat senses the humidity level of the room and turns the fan on (or to high speed for dual speed models) until the humidity level is below the preset level. Can be set up to 80% RH. The fan can also be activated through a wall control switch.						
D4SH	40 - 120	<0.3 - 0.3	18.8	1	6"	Whole Building/Local
D4DH	40 - 120	<0.3 - 0.3	18.8	2	6"	Whole Building/Local

