



Installation Guide

CONTENTS

2	What is AdvanTech™ Subfloor Adhesive?
2	AdvanTech Subfloor Adhesive Advantages
2	Coverage Rates
3	AdvanTech Subfloor Adhesive Safe Use and Handling
3	AdvanTech Subfloor Adhesive First Aid
3	Storage, Handling and Disposal
4	Adhesive Can Attachment and Changeover
4 - 5	AdvanTech Subfloor Adhesive Installation / Application
6	AdvanTech Subfloor Adhesive Cleanup
6	Troubleshooting

ATTENTION: This installation guide is intended to provide general information for the designer and end user. The following guidelines will help you properly apply AdvanTech™ subfloor adhesive. We urge anyone installing this product to read these guidelines in order to minimize any risk of safety hazards and to prevent voiding any applicable warranties. This manual is a general installation guide and does not cover every installation condition. Proper installation shall be deemed to mean the most restrictive requirement specified by Huber Engineered Woods (HEW), local building code, engineer or architect of record or other authority having jurisdiction. You are fully and solely responsible for all safety requirements and code compliance. For additional information, contact Huber Engineered Woods LLC.

What is AdvanTech™ Subfloor Adhesive?

AdvanTech™ subfloor adhesive is a high-performance, moisture-cured, gun-applied polyurethane construction adhesive that can be used in cold and wet weather conditions. It easily dispenses as a foam bead that quickly condenses to form a high-strength gel adhesive. AdvanTech subfloor adhesive bonds to AdvanTech® panels, plywood, OSB, dimensional and treated lumber, concrete, metal, gypsum wallboard, fiberglass, plastic and masonry substrates. It bonds wood-to-wood assemblies and glued floor systems on dry, frozen or wet surfaces. Used in an AdvanTech™ Subflooring Assembly, AdvanTech subfloor adhesive is the FLAT OUT BEST™ for a quiet, stiff floor and is backed by a No Squeak Guarantee at the AdvanTech subfloor to joist or truss connection. (Limitations and restrictions apply, visit SqueakFreeGuarantee.com for details).

AdvanTech subfloor adhesive is designed to be used to bond AdvanTech® flooring, OSB and plywood subfloors to the supporting floor framing below. It helps prevent movement between the floor panels and the joists/trusses which can lead to floor squeaks and pops and a bouncy floor.

It conforms to industry standards for the performance of expandable foam subfloor adhesives. See Product Data Sheet for testing results and performance properties.

AdvanTech™ Subfloor Adhesive Advantages

- No Squeak Guarantee at the panel to joist or truss connection when installed with AdvanTech subfloor¹
- Yields up to 8X more than traditional subfloor adhesive caulks²
- Exceeds industry adhesion performance standards by 2 to 5 times, including adhesion to dry, wet and frozen lumber³
- Installs quick and easy
- Bridges minor gaps on irregular surfaces

1 Restrictions and limitations apply. See SqueakFreeGuarantee.com for details.

2 See Coverage Rates below.

3 Exceeds ASTM D3498 Standard Specification for Field-Gluing Plywood to Lumber Framing for Floor Systems, dry, wet, frozen and gap filling adhesion tests.

Coverage Rates

One 24 oz. can of AdvanTech subfloor adhesive yields approximately 400 linear feet of gel adhesive at a ½" diameter bead. When compared to a 28 oz. caulk cartridge of typical subfloor adhesive, product yield per container is approx. 8 times that of the conventional adhesive applied at a 3/8" bead, per manufacturer's instructions.

AdvanTech™ Subfloor Adhesive Safe Use and Handling

- **Important** – Read all directions and cautions before use. Refer to product Safety Data Sheet (SDS) prior to handling or using AdvanTech™ subfloor adhesive.
 - Always wear proper personal protective equipment including gloves, clothing and eye protection. Wash hands thoroughly after handling.
 - Do not store in hot vehicle, direct sunlight or temperatures exceeding 122° F (50° C).
 - Do not breathe in mist, vapors or spray. Use in areas with adequate ventilation.
 - Use drop cloths to protect areas below from accidental contact.
 - Product is flammable during dispensing. Keep away from open flame, sparks, heat or other sources of ignition. Do not smoke while using this product.
 - Can is pressurized. Do not pierce or burn even after use.
 - Do not ingest.
 - Read full product label and SDS for precautionary instructions before use.
 - Do not use in any application inconsistent with manufacturer's intended use or recommendations.
 - **KEEP OUT OF REACH OF CHILDREN**
 - **CAUTION:** Contains MDI monomer, polyurethane resin, and propane/isobutene. Cured foam exposed to temperatures greater than 240° F (116° C) may release hazardous decomposition products.
-

AdvanTech™ Subfloor Adhesive First Aid

- **EYE CONTACT:** Immediately remove contact lenses if possible. With eye open, flush thoroughly with running water for at least 15 minutes and immediately seek medical attention.
 - **SKIN CONTACT:** Immediately wash affected areas with large amounts of running water and soap and rinse thoroughly. Do not pull solidified product off of skin. Any residue or cured foam will gradually wear off. Alternatively, foam can be removed by applying generous amounts of petroleum jelly or lanolin and wait one hour. Using plastic gloves, firmly wipe off affected area with a clean cloth. Repeat if necessary. Do not use solvents to remove wet or cured foam. If irritation develops, seek medical attention.
 - **INHALATION:** Overexposure to vapors may cause dizziness or headache. Move to fresh air. If having trouble breathing, seek medical attention.
 - **INGESTION:** Rinse out mouth and drink plenty of water. DO NOT induce vomiting. Immediately seek medical attention.
-

Storage, Handling and Disposal

- **SHELF LIFE:** Product will keep for 18 months in unopened can when stored between 60° F and 90° F (16° C and 32° C) in a dry and well-ventilated area. Storage above 90° F (32° C) will reduce shelf life.
- **STORAGE AND HANDLING:** Do not store cans above 122° F (50° C) and avoid freezing. Ideal storage temperature is 60° F-90° F (16° C-32° C). If can is left in freezing conditions, place in room temperature conditions 10 minutes prior to use. Do not expose cans to conditions that may damage, puncture or burst the cans. Once started, do not remove applicator gun until can is empty. Completely close control knob and store partially used adhesive can in upright position with applicator gun attached. Maximum storage for partially used cans is 30 days. If longer storage is required, remove the applicator gun from the adhesive can and clean as directed. It is NOT recommended to store partially used adhesive cans without the applicator gun attached.
- **DISPOSAL:** Dispose of leftover material/containers in accordance with federal, state and local regulations. See Safety Data Sheet (SDS) for more information.

Adhesive Can Attachment and Changeover

- APPLICATOR GUN:

- ATTACHMENT TO GUN:

Ensure control knob is in the closed position (all the way right/clockwise.) Place threaded end of container into applicator gun basket and rotate in a clockwise direction until tight. Do not over-tighten.

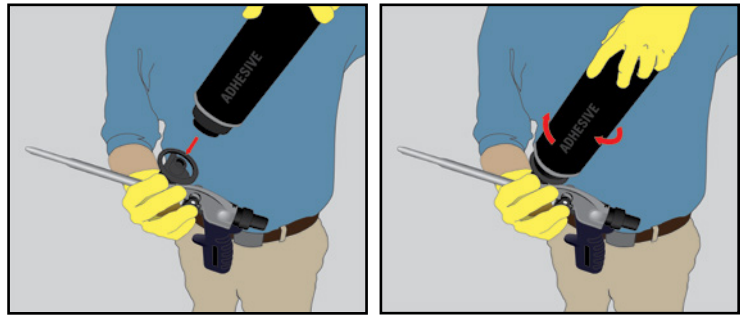
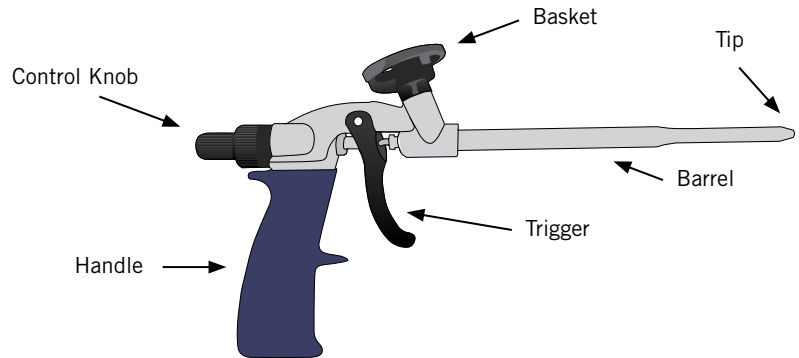
- PREPARING ADHESIVE:

Shake can vigorously for minimum 30 seconds.

- CONTAINER CHANGEOVER:

Once started, do not remove applicator gun from can until can is empty. Point applicator gun in a safe direction and purge the applicator barrel. Remove can by rotating can in a counter-clockwise direction. Clean applicator basket with AdvanTech™ polyurethane cleaner as needed.

- Immediately attach new can of AdvanTech™ subfloor adhesive.



AdvanTech™ Subfloor Adhesive Installation / Application

Always refer to local building codes prior to application of AdvanTech™ subfloor adhesive. Read all product directions and safety information before use. You are fully and solely responsible for all safety requirements. Good construction practices should be followed at all times.

Step 1 // Safety

Adhesive foam bonds quickly to skin – wear gloves, eye protection and work clothes during application.

Never point the nozzle at yourself or others and always assume applicator gun is pressurized.

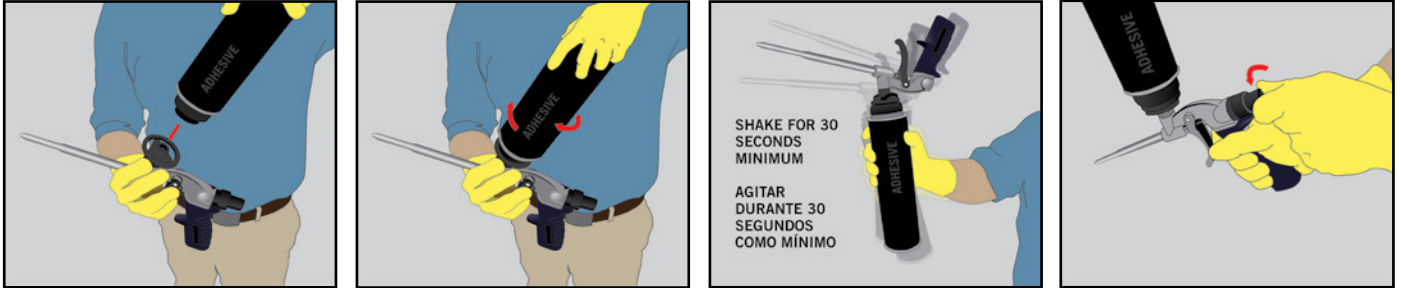
Step 2 // Surface Preparation

Surface should be free from oil, grease and standing water. Adhesive may be applied in temperatures from 20° F (-6° C) to 105° F (41° C). Use drop cloths as necessary. Product will gun slowly when cold.

Step 3 // Adhesive Preparation

Place threaded end of can into applicator gun basket and rotate in a clockwise direction until tight. Do not over-tighten. Shake container vigorously for minimum 30 seconds prior to initial application.

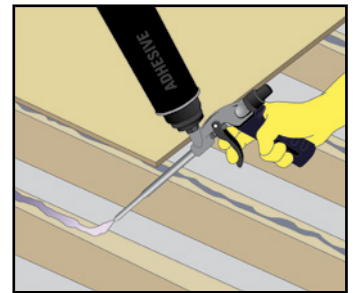
Open control knob (left/counter-clockwise) and test a bead of adhesive. Bead width can be adjusted by opening/closing the control knob or adjusting the trigger pull back. Adjust these two factors to your desired application approach, until you get a 1/2" foam bead.



Step 4 // Installation

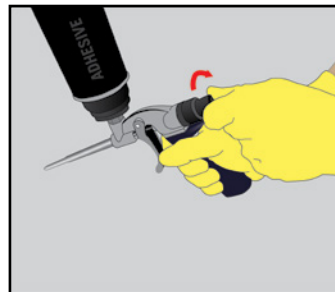
Check the tip of the applicator gun prior to dispensing adhesive and remove any dried adhesive from the tip with AdvanTech™ subfloor adhesive or by safely scraping with a utility knife or other sharp object.

TIP: Wipe gun tip with a rag at the end of each use to avoid adhesive drying on the gun tip. Dispense foam adhesive with the can in the upside-down position. Apply a continuous 1/2-inch foam bead to floor joists. A 1/2" diameter foam bead will collapse down into approximately a 3/8" inch wide gel. **CAUTION:** Do not press tip of gun directly to floor joists and maintain a distance slightly above the work surface to avoid adhesive splatter.



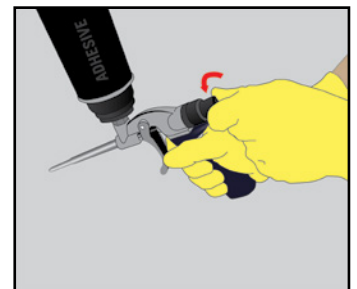
Install subfloor panels within 20 minutes of dispensing subfloor adhesive. Install ALL subfloor fasteners, edge and field fasteners, at initial installation before the adhesive cures. If the glue cures before the subfloor has been laid and fastened, remove all glue with a scraper and reapply.

When finished for the day or the project, if there is still adhesive in the can, completely shut off applicator gun by rotating control knob clockwise until stopped. Store the applicator gun attached to the adhesive container for up to 30 days.



Step 5 // Restarting with a new can

To restart a partially used can with applicator gun attached, hold the adhesive can and shake vigorously for minimum 30 seconds. Rotate the control knob in a counter-clockwise direction to open the valve. Applicator gun is now ready for use.



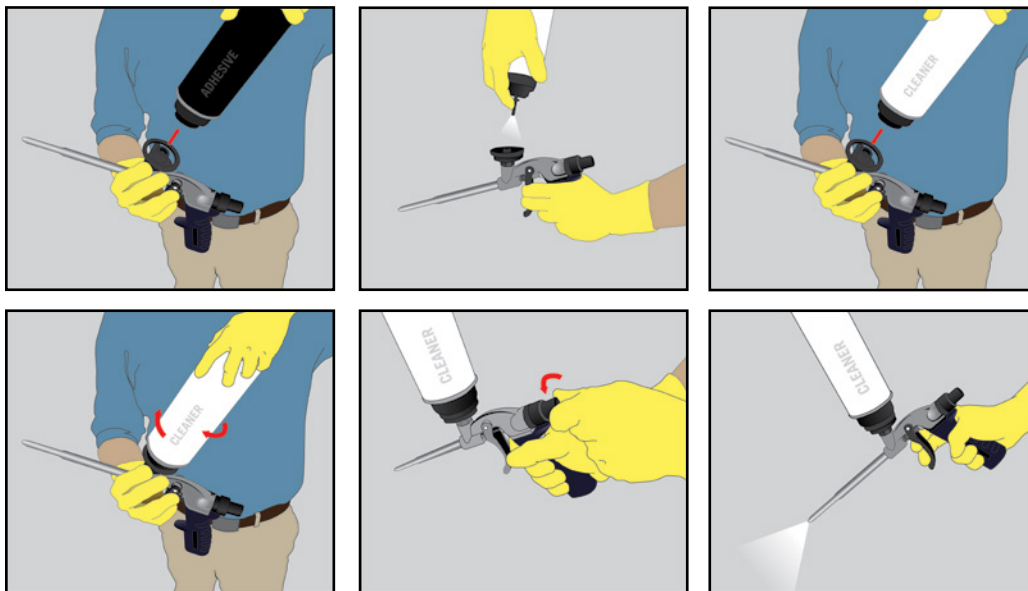
AdvanTech™ Subfloor Adhesive Cleanup

AdvanTech™ polyurethane foam cleaner cleans wet foam from hands, tools and applicator guns. It can attach directly to the applicator gun and spray right from the can to clean the inside of the gun.

With partially used cans of adhesive, keep the gun attached and close the control knob. Wipe gun tip with rag at the end of each use or spray tip with AdvanTech polyurethane foam cleaner to prolong applicator gun life. Any cured adhesive on applicator tip can be removed by safely scraping with a utility knife or other sharp object. Cured adhesive on guns that are PTFE coated can be removed by hand. In between can changeovers, it is recommended to spray the basket of the gun using the AdvanTech polyurethane foam cleaner.

To clean an applicator gun that will be stored by itself with no adhesive can attached, remove empty adhesive can from gun basket by rotating in a counter-clockwise direction. Spray applicator basket using AdvanTech polyurethane foam cleaner, then attach cleaner can directly to the gun by placing threaded end into applicator gun basket and rotating clockwise until tight. While pointing applicator gun in a safe direction, depress trigger until only cleaner comes out of the tip of the gun.

Close control valve and remove cleaner can. Rotate control knob in a clockwise direction until closed for storage.



Troubleshooting

Adhesive will not spray straight out of the gun: Check the gun tip and remove any dried adhesive. If the problem persists, remove the subfloor adhesive and clean the applicator gun with AdvanTech polyurethane foam cleaner. If the problem still continues, the inside of the gun applicator may be clogged, and it is recommended to obtain a new applicator gun.

Adhesive sprays inconsistently: Shake the can vigorously for at least 30 seconds to improve the spray pressure. If the problem persists, remove the subfloor adhesive and clean the applicator gun with AdvanTech polyurethane foam cleaner. If the problem still continues, the inside of the gun applicator may be clogged, and it is recommended to obtain a new applicator gun.

Questions? Call or visit our website

p 800.933.9220
w AdvanTechSFA.com

AdvanTech™
SUBFLOOR ADHESIVE

AdvanTech™ Subfloor Adhesive

Installation Guide